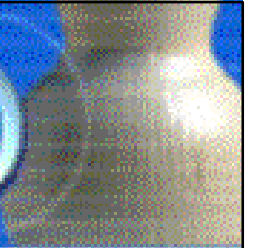
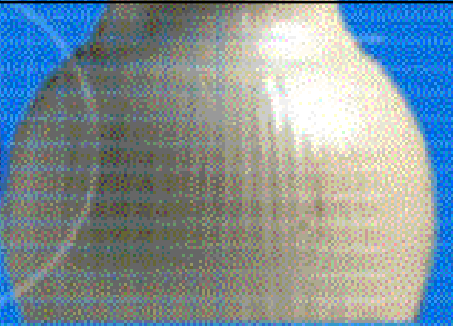


Augmented Representation of Cultural Objects ARCO





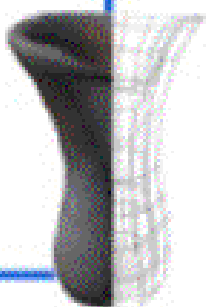
ARCO



Augmented Representation of Cultural Objects

User overview

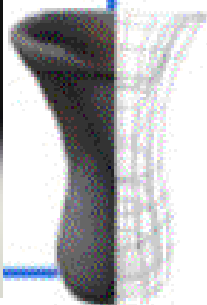
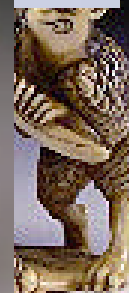
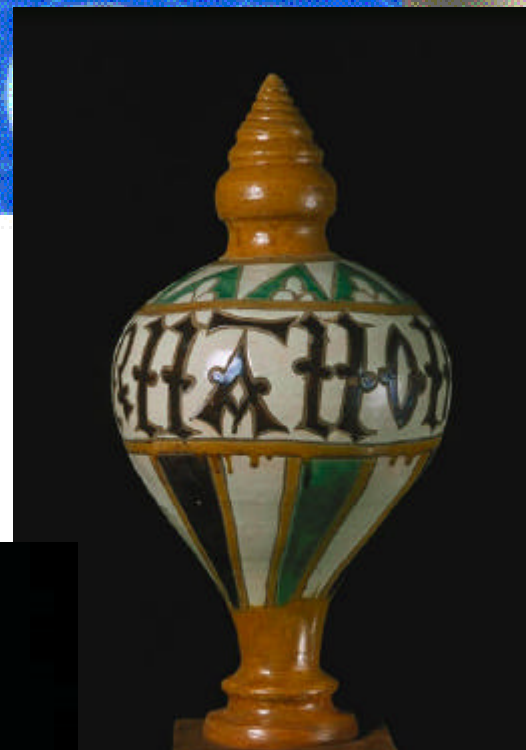
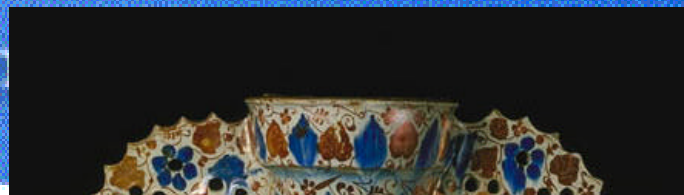
- Victoria and Albert Museum
 - Large national museum in UK
 - 4 million objects
- Sussex Past
 - Group of small UK provincial museums
 - 500 000 objects



Augmented Represent

Objects AR

ase

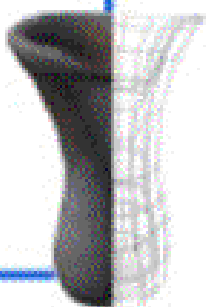


www

ARCO: EVA FI

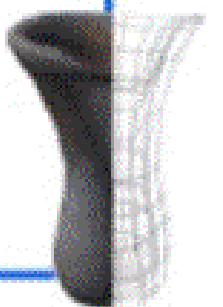
Why we make images

- Publications
- Catalogues
- Collections management
- Web site
- Education
 - In the museum
 - On the web



Education

- DCMS targets and objectives
- All funding bodies have similar targets
- Improve access
- Social inclusion



How do you describe an object?

- Words, text
- Objects are 3D
- They have a front and back
- Top and bottom
- They have mass and volume



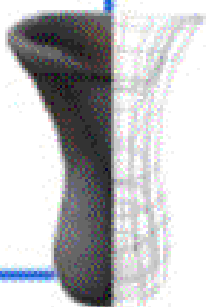


Photographer: Pip Barnard

Augmented Representation of Cultural Objects ARCO



Photographer: Pip Barnard



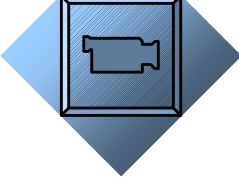
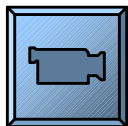
Augmented Representation of Cultural Objects ARCO

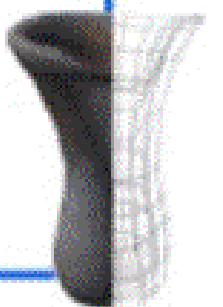


Photographer: Pip Barnard



How we are doing this

- Quick time movies 
- Large volume of content on the web site
- Panoramas of galleries 
- Virtual spaces





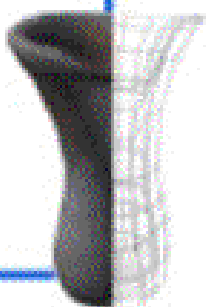
What 3d models can do

- Add new ways of seeing
- Give a greater degree of spatial awareness
- Allow comparison of volume and mass
- Be placed in virtual spaces
- Help create the virtual museum



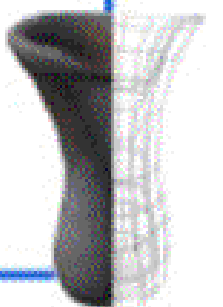
Issues

- Difficult to achieve
- Expensive
- Complex
- New set of skills
- Studio or workshop restricted



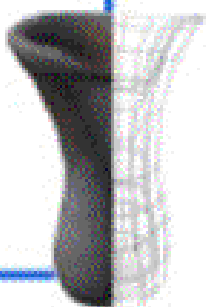
Tools

- Easy to use
- Very simple software
- Content management
- Link to museums collections management
- Simple model refinement
- Simple insertion into web pages and virtual galleries



User roles

- Create test situations
- Access to museum content
- Test developments by technical partners
- Evaluate results
- Encourage use by other museums



Augmented Representation of Cultural Objects ARCO

